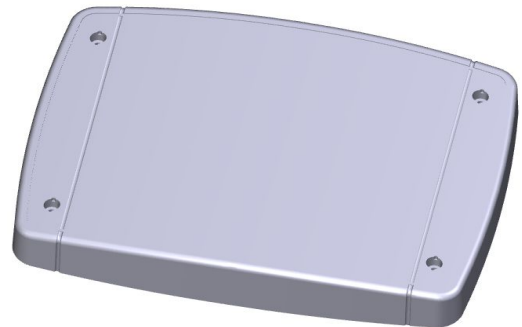




SPECIFICATIONS:

MULTICONNECT III

– WM-Bus, M-Bus, SO –



General

The Comgy MultiConnect III captures meter protocols and incoming digital signals and forwards these via a mobile network to our Meter Gateway Management (MGM) web application or to a customer-designated server.

Forwarded data are decrypted only once they reach the server and remain encrypted both during transmission and on the device. Devices can be configured entirely server-side through our MGM application. This means they can be adjusted anytime – without the need for a site visit.

The integrated data logger also backs up both device data and signals to ensure nothing is lost if the mobile network is disrupted.

Two optional relays may also be integrated to allow for remote control of devices such as heat pumps, solar panels, or door openers.

Due to its compact size, the MultiConnect III is ideally suited for electricity- and heat-transfer points. An external connection point allows for antennas to easily extend from steel enclosures.

Our MultiConnect III consumes a maximum of 12 kWh of electricity per year at full functionality and supports Smart Meter Language (SML) in addition to wireless M-Bus and OMS.

It comes with a particularly stable casing for the purpose of installation in stairwells and outside areas. A frontal covering can also be made available in the customer's corporate or preferred design.

Our MultiConnect III consumes 13 kWh per year (up to 90 kWh as "M-Bus meister") at full functionality and supports in addition to wireless M-Bus and OMS also the Smart Meter Language (SML) as radio protocol.

Areas of application

- Data gateway
- M-Bus bridge to wireless M-Bus/OMS
- SO bridge to wireless M-Bus/OMS
- Remote on-and-off control of device-sites such as heat pumps, CHP, solar panels, locks/openers.



Technical specifications

Dimensions	245 x 185 x 48 mm
Weight	600–980 g
Power supply	5 V via internal A/C adapter or battery
Operating temperature range	-20 bis +50°C
Dry contact relay (optional)	30 V, 5 A (max. load)
Protection class	IP 65
Installation type	Wall-mounted enclosure

Network specifications

M-Bus (optional)	M-Bus port
OMS/wireless M-Bus (optional)	Frequency: 868 MHz RF sensitivity: -109 dBm, output: +12 dBm
Wi-Fi (b/g/n) (optional)	Frequency: 2.4 MHz RF sensitivity: -98 dBm, output: +18 dBm
GSM (optional)	Frequency: GSM 900/1800 MHz RF sensitivity: -109 dBm, output: +0...+33 dBm

Standards and norms

Radio infrastructure	EN 300 328 V1.8.1 EN 300 220-1 V2.4.1 EN 300 220-2 V2.4.1 EN 301 511 V9.0.2
Security	EN 60950-1:2006 + A11:2009 + A1:2010 + A12:2011 + A2:2013 EN 62368-1
Electromagnetic compatibility (EMC)	EN 301 489-01 (V1.9.2) EN 301 489-03 (V1.6.1) EN 301 489-07 (V1.3.1) EN 301 489-17 (V2.2.1) EN 55032 (2016-02) EN 55035 (2016-04)
Health	EN 62311: 2008

Models

Item number	Label	Equipment
16941000	MCIII-wM-Bus	MultiConnect II — wM-Bus Wall-mounted enclosure, IP 65 with internal A/C adapter, GSM, bluetooth, wM-Bus with internal antenna, 4x charges/S0 ports (EN 62053-13 class B)
16941100	MCIII-wM-Bus+ Wi-Fi	MultiConnect II — wM-Bus + WiFi Wall-mounted enclosure, IP 65 with internal A/C adapter, GSM, wireless LAN, Bluetooth, wM-Bus with internal antenna, 4x charges/S0 ports (EN 62053-13 class B)
16952000	MCIII-Repeater	MultiConnect II GSM — Repeater Single-Hop Wall-mounted enclosure, IP 65 with internal battery, bluetooth port, wM-Bus with internal antenna, network capability
16962000	MCIII-RepMulti	MultiConnect II GSM — Repeater Multi-Hop Wall-mounted enclosure, IP 65 with internal battery, bluetooth port, wM-Bus with internal antenna, network capability
16942000	MCIII-Battery	MultiConnect II GSM — Battery Wall-mounted enclosure, IP 65 with internal battery, GSM, bluetooth port, wM-Bus with internal antenna, network capability
16941121	MCII-MiniMaster	MultiConnect II — M-Bus Mini Master Wall-mounted enclosure, IP 65 with internal battery, GSM, wireless LAN, bluetooth, wM-Bus with internal antenna, 20 M-Bus ports, 4x charges/S0 ports (EN 62053-13 class B), 2 relays
16941122	MCIII-Master	MultiConnect II — M-Bus Master Wall-mounted enclosure, IP 65 with internal A/C adapter, GSM, wireless LAN, bluetooth, wM-Bus with internal antenna, 120 M-Bus ports, 4x charges/S0 ports (EN 62053-13 class B) 2 relays