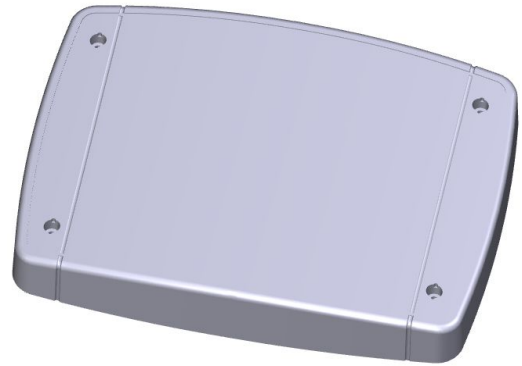




# SPECIFICATIONS: MULTICONNECT III – BATTERY GATEWAY –



## General

The Comgy MultiConnect III captures meter protocols and incoming digital signals and forwards these via a mobile network to our Meter Gateway Management (MGM) web application or to a customer-designated server.

Forwarded data are decrypted only once they reach the server and remain encrypted both during transmission and on the device. Devices can be configured entirely server-side through our MGM application. This means they can be adjusted anytime – without the need for a site visit.

The integrated data logger also backs up both device data and signals to ensure nothing is lost if the mobile network is disrupted.

The Smart Meter Language (SML) is supported as a radio protocol in addition to wireless M-Bus and OMS.

## Areas of application

- Data gateway for wM-Bus/OMS
- Repeater for wM-Bus devices/OMS

## Technical specifications

Dimensions	245 x 185 x 48 mm
Weight	600–980 g (depending on batteries)
Power supply	Battery
Operating temperature range	-20 bis +50 °C
Protection class	IP 65
Installation type	Wall-mounted enclosure



## Network specifications

OMS/wireless M-Bus	Frequency: 868 MHz RF sensitivity: -109 dBm, output: +12 dBm
GSM	Frequency: GSM 900/1800 MHz RF sensitivity: -109 dBm, output: +0...+33 dBm

## Standards and norms

Radio infrastructure	EN 300 328 V1.8.1 EN 300 220-1 V2.4.1 EN 300 220-2 V2.4.1 EN 301 511 V9.0.2
Security	EN 60950-1:2006 + A11:2009 + A1:2010 + A12:2011 + A2:2013 EN 62368-1
Electromagnetic compatibility (EMC)	EN 301 489-01 (V1.9.2) EN 301 489-03 (V1.6.1) EN 301 489-07 (V1.3.1) EN 301 489-17 (V2.2.1) EN 55032 (2016-02) EN 55035 (2016-04)
Health	EN 62311: 2008

## Models

Item number	Label	Equipment
16952000	MCIII-Repeater	MultiConnect II GSM — Repeater Single-Hop Wall-mounted enclosure with internal battery, GSM, bluetooth port, wM-Bus with internal antenna, network capability
16962000	MCIII-RepMulti	MultiConnect II GSM — Repeater Multi-Hop Wall-mounted enclosure with internal battery, GSM, bluetooth port, wM-Bus with internal antenna, network capability
16942000	MCIII-Batterie	MultiConnect II GSM — Batterie Wall-mounted enclosure with internal battery, GSM, bluetooth port, wM-Bus with internal antenna, network compatability